



DATA SHEET

Pyranometer for Measuring Meteorological Irradiance



Intelligent Measurement & Testing

Measure the meteorological Irradiance in all Weather Conditions

Gain a broad view of the meteorological irradiance with the premium pyranometers from Kipp & Zonen.

These pyranometers were developed for use in all weather conditions – from an Arctic climate through to desert conditions. They are used all over the world for many purposes – in meteorology, hydrology, climate research, logging solar irradiance, materials testing, monitoring greenhouses and building automation to name just a few applications. In photovoltaics, pyranometers are primarily used in research and development.

Benefits & Features

- Spectrally flat, from class C to beyond the requirements of class A as per ISO 9060
- Installed around the world by national meteorology and climate networks
- Utilised in PV monitoring
- Either analogue outputs or MODBUS as per industry standard
- Mean time between failures (MTBF) in excess of 10 Years
- 5 Year worldwide manufacturer warranty

Type Overview

(Extract, further more on request)

Type	SMP3-A SMP3-V	SMP6-A SMP6-V	SMP10-A SMP10-V	SMP12-A SMP12-V
Classification as per ISO 9060	Spectrally flat class C	Spectrally flat class B	Spectrally flat class A	Spectrally flat class A
Analogue signal -A version -200 to +2000 W/m ²			4 to 20 mA	
Analogue signal -V- version -200 to +2000 W/m ²			0 to 1V	

Technical Data

All types

Output signal digital	RS485 / MODBUS
Output signal analogue	1 V (-V version) or 4 to 20 mA (-A version)
Sensor type	Thermophile sensor element
Operating temperature	-40 to +70 °C
Degree of protection	IP67
Customs tariff number	90 15 80 20

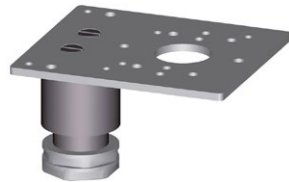
Options

→ Cable length 10 or 50 m

Accessories

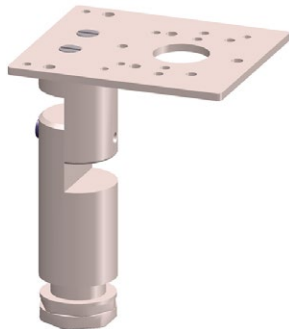
(Extract, further more on request)

Adaptor Pyranometer



Adaptor for pyranometer CMP or SMP, incl. pin (might also require mounting unit wind/pyranometer or Traverse compact for wall or pole mounting)

Adaptor Pyranometer adjustable



Adaptor for pyranometer CMP or SMP, incl. Pin, 0-90° adjustable (might also require mounting unit wind/pyranometer or Traverse compact for wall or pole)

Scope of Delivery

All types

Instruction manual

Calibration certificate

Intelligent Measurement & Testing